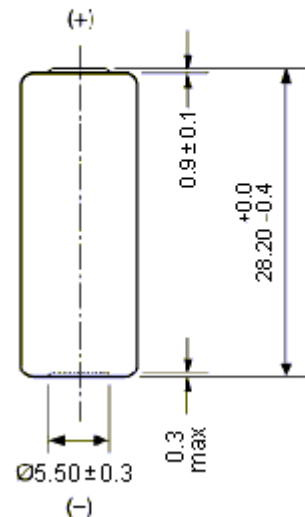
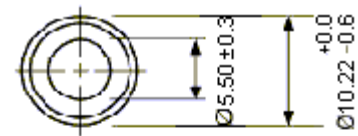


Description	: Alkaline High Voltage Battery
Nominal Voltage	: 12Volts
Nominal Dimensions	: Ø10.22mmx28.2mm
Terminal	: Nickel plated flat contacts - protruded red(+); recessed black (-)
Jacket	: Metal jacket
Internal Connection	: Pressure
Applications	: Remote controller
Average Weight	: 7.9g
Date Code	: Unless otherwise specified, each batteries will carry a numeric year code and analogue month code
Shelf Life	: Not less than 90% of the service capacity within first year. , not less than 85% of the service capacity with third year storage at $22 \pm 3^{\circ}\text{C}$ 40-80 %RH
Insulation	: 5MΩ min.
Resistance	
Close Circuit Voltage	: 9.5 Volts (min.)(load resistor 400Ω at $22 \pm 3^{\circ}\text{C}$ for 0.1 to 2 seconds)
Current Drain	: Under 15mA pulse, 0.5mA continuous
Nominal Service Life	: 107hrs (at 20kΩ load) (to 6.0V at $22 \pm 3^{\circ}\text{C}$)
Average Service	: 55mAh(at 20kΩ load)
Capacity	(to 6.0V at $22 \pm 3^{\circ}\text{C}$)

Cross References:

GP	Eveready	Duracell	Varta
23AE	-	-	-

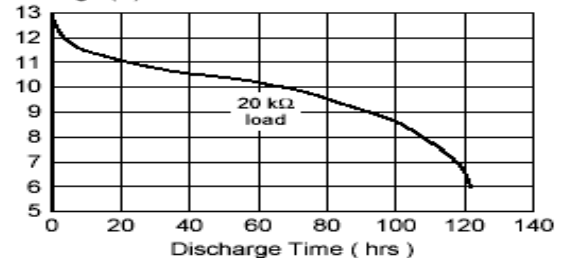
Model No.: **GP23AE(鐵將軍)**



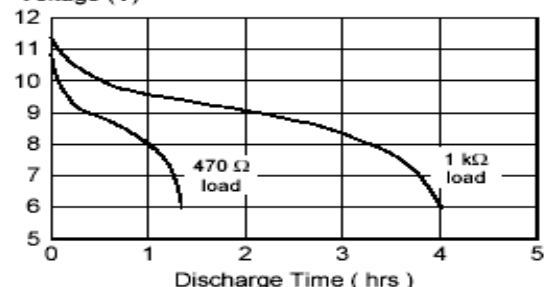
Unit : mm

Typical Discharge characteristics at $22 \pm 3^{\circ}\text{C}$

Normal Rate Discharge
Voltage (V)



High Rate Discharge
Voltage (V)



The information (subject to change without prior notice) contained in this document is for reference only and should not be used as a basis for product guarantee or warranty. For applications other than those described here, please consult your nearest GP Sales and Marketing Office or Distributors.